

PERSONAL NAVIGATOR

TUESDAY, APRIL 17, 2012

Sunrise: 6:30 a.m. Sunset: 7:07 p.m.
 Evening Attire: Cruise Casual
 All Ashore: Approx. 12:45 p.m.
 All Aboard: 5:30 p.m.
 Tuesday: Sunny High: 79°F/26°C
 Wednesday: Partly Sunny High: 77°F/25°C

COSTA MAYA



On the eve of their graduation, three best friends go on a magical journey down the wishing well. A host of Disney characters help them discover the connection between children who are becoming adults, and adults who stay in touch with being a kid at heart.

Walt Disney Theatre
Decks 3 & 4, Forward
4:00, 6:15 p.m. & 8:30 p.m.



Assistance available at the entrance to the Walt Disney Theatre 30 minutes prior to show time.



Costa Maya Port Information

Costa Maya is a tourist region located on the Yucatán Peninsula 100 miles south of Playa del Carmen near the border of Belize in Mexico. Comprised of 2 small villages, Mahahual and Xcalak, Costa Maya provides a picture-perfect getaway the entire family is sure to love.

Early Mayans were predominant in the area from 200 B.C. to 900 A.D. In the 16th century, English pirates ravaged the coast and battled the Spanish for control of the region. At the end of the 19th century, the Mexican Navy took over the land. A treaty with Britain was signed soon after limiting the territorial rights of Mexico, thereby forcing Mexico to build a new trade port in Xcalak.

By the 1950's, the economy was flourishing as businesses - including stone and wood construction companies - made the area a supply center for the region. Steady growth continued until the mid-1990's when the government outlined a plan to make Costa Maya a tourist destination. Today, tourism is Costa Maya's main economic revenue stream and it's easy to understand why, thanks to the island's plethora of unspoiled natural beauty that has remained untouched for thousands of years.

DOCKING

The ship will dock at the Puerto Costa Maya, located approximately 1/2 mile north of Majahual.



FAMILY CABARET

Featuring the Comedy and Juggling of Michael Holly as he entertains the entire family in this cabaret style show.

7:30 p.m.
The Tube, Deck 4, Aft

Don't Miss:

Disney Animation: Illusion of Life: Persistence of Vision
 9:30 a.m., D Lounge, Deck 4, Midship

Go behind the scenes at Walt Disney Animation Studios and learn the principles that make animation work, and try your hand at creating your own easy animation demonstration in this fun and fascinating enrichment program.

Disney's Behind the Scenes - Concept to Stage
 10:00 a.m., Buena Vista Theatre, Decks 4 & 5 Midship

Join Broadway-bound Disney Songwriters Alan Zachary & Michael Weiner for a look behind the scenes of what it takes to bring a show from concept to stage, including the newest shows onboard the Disney Fantasy: A Fantasy Come True and An Unforgettable Journey. They will share their stories from over 10 years of writing for Disney Animation, Parks and Cruise Line, including Twice Charmed for the Disney Magic.

\$5,000 Mega Jackpot Bingo

10:30 a.m., D Lounge, Deck 4, Midship

It's big, it's massive, it's supersized. It's \$5,000 MEGA jackpot bingo! Take home \$5,000 if you can cover your card in 46 numbers or less. If not, we carry on to play for the biggest cash prize of the session.

Card Pre Sales start at 10:30 a.m.

First game starts at 10:45 a.m.



Please check your tour tickets for meeting times and locations. Visit the Port Adventures Desk, Deck 5, Midship for any questions.

DINNER MENU

Animator's Palate: Prince & Princess Menu
 Enchanted Garden: Prince & Princess Menu
 Royal Court: Prince & Princess Menu

DRINK OF THE DAY

Key Lime Margarita (Alcoholic)
 Cranberry No-Jito (Non Alcoholic)

IMPORTANT NUMBERS

Fire/Security: 7-3001
 Medical Emergency: 7-3000
 Health Center: 7-1923

FAMILY ACTIVITY HIGHLIGHTS

COSTA MAYA & COZUMEL SHOPPING HIGHLIGHTS

La Piazza, Deck 4, Aft - 9:30 a.m.

Join Johan & Marissa for your final opportunity to learn about the incredible shopping ashore this cruise. Plus one lucky Guest will win a gemstone bracelet!

DISNEY VACATION CLUB® GROUP PRESENTATION

The Tube, Deck 4, Aft - 10:00 a.m.

Want to learn more about taking magical vacations year after year? Stop by our interactive group presentation to find out more information from a Disney Vacation Club representative.



DISNEY CHANNEL ON DECK

Deck Stage, Deck 11, Midship - 10:30 a.m.

Don't change that channel! It's time for the Disney Channel Pool Party! Your Cruise Staff will host an exciting deck party full of games, and contests, all in between your favorite Disney Channel shows! So sit back, relax and enjoy the sun!

MICKEY 200

The Tube, Deck 4, Aft - 11:30 a.m. (Limited Availability)

Don't eat your vegetables... race them in this wild and wacky charge to the finish line. May the best veggie win!

FAMILY CABARET: MICHAEL HOLLY

The Tube, Deck 4, Aft - 7:30 p.m.

Featuring the Comedy and Juggling of Michael Holly as he entertains the entire family in this cabaret style show.

OFFICER PIN TRADING

Preludes, Deck 3, Forward - 7:30 p.m.

Come trade pins with the officers of the Disney Fantasy.

FAMILY KARAOKE

D Lounge, Deck 4, Midship - 9:30 p.m.

Join your Cruise Staff in D Lounge tonight and sing along to your favorite song - fun for everyone.



SALUDOS AMIGOS FIESTA

D Lounge, Deck 4, Midship - 10:15 p.m.

Bring the family out to this interactive dance party featuring The Three Amigos. We will party with Donald Duck, learn Salsa, Meringue and have a Latin good time!

ADULT ACTIVITY HIGHLIGHTS

SENSES SPA SEMINARS

Sunrise Stretch - Senses Fitness Center, 7:00 a.m.

Fab Abs - Senses Fitness Center, 7:30 a.m.

Body Sculpt Boot Camp (Fee Applies) - Senses Fitness Center, 9:00 a.m.

Seminar: Back Pain Solutions - Outlook, 9:15 a.m.

Seminar: Secrets to a Flatter Stomach - Outlook, 10:00 a.m.

Fitness Frenzy (13-17yrs) (Fee Applies) - Senses Fitness Center, 10:00 a.m.

Facial Workshop - Outlook, 11:00 a.m.

Pathway to Yoga - Senses Fitness Center, 4:00 p.m.



ART OF THE THEME SHOW TOUR

Meet at Meridian, Deck 12, Aft - 9:30 a.m.

A walking tour that highlights the ship's design of Disney culture, theming and artistry.

SMOOTHIE TIME

Outlook, Deck 14, Midship, 12:00 p.m.

XBOX™ KINECT® CHALLENGE

O'Gills Pub, Deck 4, Aft, 4:30 p.m.

MIXER EVENT

Outlook, Deck 14, Midship, 10:00 p.m.

CLUB
18*21

LONGEST DRIVE

Golf Simulator, Deck 13, Aft - 3:15 p.m.

Challenge your fellow cruisers and see who has the longest drive!

PARTNER PLAYOFF

O'Gills Pub, Deck 4, Aft - 7:30 p.m.

Sports Trivia with a Disney twist! A unique, fast paced game you start out by competing against your partner and then finish by teaming up with them to beat those other guys!



POPI

The Tube, Deck 4, Aft - 10:30 p.m.

Have you been told you are full of useless information about pop culture? If the answer is "Yes", then you have what it takes to play the high energy game show all about the world of Pop!



\$5,000 MEGA JACKPOT BINGO

D Lounge, Deck 4, Midship

Card Sales - 10:30 a.m. Game Starts - 10:45 a.m.

It's big, it's massive, it's supersized. It's \$5,000 MEGA jackpot bingo! Take home \$5,000 if you can cover your card in 46 numbers or less. If not, we carry on to play for the biggest cash prize of the session.

MEGA RAFFLE JACKPOT BINGO

**D Lounge,
Deck 4, Midship**

Card Sales - 7:15 p.m.

Game Starts - 7:30 p.m.

Join your Cruise Staff for family Bingo fun! Four cash prize games. Plus, great raffle prize packs to be won. Don't miss out on the fun!



YOUTH ACTIVITIES HIGHLIGHTS

DINE & PLAY

A convenience for families dining at 8:15 p.m., our Youth Activities Counselors will be available at 9:15 p.m. at the entrance of Royal Court, Enchanted Garden and Animator's Palate dining rooms to bring registered children to join the fun in the Youth Activity areas.



Deck 5 Midship (7-1440) 9:00 a.m. - 11:00 p.m.

ALOHA LUAU

9:30 a.m.

Get your hula on and bring junior cruisers to the Oceaneer's Club to kick off their cruise Hawaiian Style with Lilo and Stitch and some of their best friends!

ONCE UPON A TIME

4:00 p.m.

Join Beverly the Bookmaker for a magical, musical story time featuring a Disney Princess!



Deck 5 Midship (7-1445) 9:00 a.m. - 12:00 Mid.

SUPER SLOPPY SCIENCE - EGGS PERIMENTS

9:30 a.m.

Join Professor Make-O-Mess in some of the most extreme experiments you will ever see in the world of Super Sloppy Science!

MAGIC PLAYFLOOR

1:15 p.m.

Have fun and explore the latest technology of the Magic Playfloor!

ANYONE CAN COOK - CUPCAKES

7:00 p.m.

Anyone can cook as we work together to create some of our favorite treats.

GET THE HOOK

9:30 p.m.

A villainous villain has stolen Captain Hook's prized golden hook. Become a member of the Top Deck Detective Agency and help solve the clue's to retrieve Hook's hook.



Deck 13 Midship (41-14426) 10:00 a.m. - 1:00 a.m.

ANYONE CAN COOK - PIZZA

2:30 p.m.

Anyone can cook as we work together to create some of our favorite treats.

THAT'S HILARIOUS

9:00 p.m.

A game of quick wit and improvisation where you become the star of the show. Work with your fellow cruisers to perform sketches and applaud loudly as you each have the chance to perform to a live audience.



Entrance on Deck 4 Forward (7-9418)

12:00 p.m. - 2:00 a.m.

DISNEY ANIMATION: ILLUSION OF LIFE - CARTOON PHYSICS

3:00 p.m.

Go behind the scenes at Walt Disney Animation Studios and see how flat drawings and pencil lines can come to life through basic techniques such as Stretch and Squash, and create your own "bouncing ball" animation exercise in this entertaining and fun enrichment program.

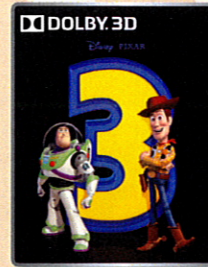
DIVE INTO DJ'ING

4:30 p.m.

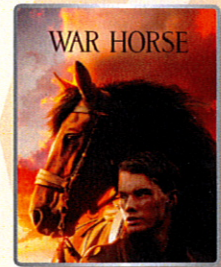
Hop on the turn tables and learn to scratch with Guest DJ Cide.

BUENA VISTA THEATRE

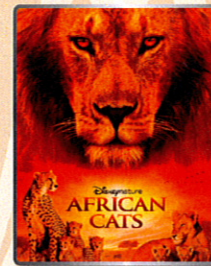
Today's Movies



2:00 p.m.
Run Time: 1 hr 43 mins
Rating: G



5:00 & 8:00 p.m.
Run Time: 2 hrs 26 mins
Rating: PG-13



11:00 p.m.
Run Time: 1 hr 29 mins
Rating: PG



Bring the family out to this interactive dance party featuring The Three Amigos. We will party with Donald Duck, learn Salsa, Meringue and have a Latin good time!

*D Lounge,
Deck 4, Midship
10:15 p.m.*



Have you been told you are full of useless information about pop culture? If the answer is "Yes", then you have what it takes to play the high energy game show all about the world of Pop!

*The Tube (18+),
Deck 4, Aft
10:30 p.m.*

YOUTH ACTIVITIES OPEN HOUSE

Open House is an opportunity for all to come and participate in a variety of exciting activities and free time in the Oceaneer Club, Lab, Edge and Vibe throughout the cruise. During these times secured programming will still be offered in the other venue for those looking to check their children into care.

MORE TO ENJOY WHILE ONBOARD

ONBOARD AIRLINE CHECK IN

If you would like to have your boarding passes printed for you onboard and have your luggage taken to the airport for you, register by midnight tomorrow. If you have Disney Cruise Line airport transfer to Orlando International Airport and fly with one of the participating airlines. Please stop at Guest Services, Deck 3, Midship.

ON DEMAND TV

Watch Disney movies, Hollywood features, ABC Shows, and even captioned content, plus much more "On Demand" for FREE in the comfort of your stateroom! Bookmark your movie and come back to watch it later. Press MENU on your stateroom television remote control, and follow the prompts.

SURF @ SEA

\$0.75 per minute, or save money by buying blocks of time. \$55.00 for 100 minutes, \$100.00 for 250 minutes and \$150.00 for 500 minutes. Wireless information sheets are available at Guest Services, Deck 3, Midship. *Please note: Due to satellite connectivity, onboard internet service will be noticeably slower than you may be accustomed to and may at times be interrupted or unavailable.*



SENSES
SPA & SALON


SALON TASTER SPECIAL

- Scalp Massage
- European Facial
- Hand Treatment
- Sunglow Makeover
- Conditioning Hair Treatment
- Eye Collagen Treatment
- Foot & Ankle Massage
- Neck & Shoulder Massage

Three for 99.00
Five for 119.00
All Eight for 139.00

DOONEY & BOURKE EXCLUSIVE

Disney Fantasy Inaugural Dooney And Bourke available in Sea Treasures, Mickey's Mainsail and Whitecaps. With a limit of 2 per style, per Guest.



Shutters DIGITAL PACKAGES

Do you only need a small number of digital images of your photos? We now offer two digital packages where you can choose your selected images in the comfort of your own home! Send them to friends or upload them on social media sites, the choice is yours! Please see one of our friendly Shutters staff to explain this great new product. Your photos will be available for viewing on our interactive kiosks in Shutters Digital as well as in your personal photo folder in Shutters, Deck 4 Midship, Conditions applies.

**Please note that photos are available for viewing on our interactive photo kiosks approximately five hours after being taken and are only available for purchase during this cruise.*

DF 002 4-14-2012 ©DISNEY

PORT & SHOPPING INFORMATION

Join Johan & Marissa for your final opportunity to learn about the incredible shopping ashore this cruise. Plus one lucky Guest will win a gemstone bracelet! La Piazza, Deck 4, Aft at 9:30 a.m.



CAN'T WAIT FOR YOUR NEXT CRUISE?

Don't wait to book your next cruise! You'll save 10%, receive up to a \$200 onboard credit, and pay a reduced deposit when you book today. Just visit the Future Cruise Sales Desk, Deck 4 Midship, or call 7-2848. Tune to Channel 8 on your stateroom TV for details.



DISNEY VACATION CLUB® GROUP PRESENTATION

Want to learn more about taking magical vacations year after year? Please see a Disney Vacation Club representative on Deck 4, Midship, or call 7-2805 from your stateroom phone for more information about our interactive group presentation.



Disney Cruise Line PORT ADVENTURES

Welcome to Costa Maya, a secluded destination on Mexico's stunning Riviera Maya! The port of Costa Maya is booming and there are many amazing new Port Adventures to choose from. There is limited availability on tours, so stop by the Port Adventures Desk, Deck 5, Midship, to reserve your place. Don't forget to plan ahead for Castaway Cay, where only a few Stingray encounters remain available.

SHOPPING

FANTASY AND INAUGURAL SAILING

Check out the amazing array of products from baseball caps, pins to t-shirts available in Sea Treasures, Mickey's Mainsail and Whitecaps, Deck 3, Forward.

DUTY FREE FRAGRANCE

Find top designer fragrance lines in Whitecaps all available at Duty free pricing. Choose from Chanel, Bulgari, Calvin Klein and more. Whitecaps Deck 3, Forward.

TANZANITE

One time only unveiling of a massive selection of tanzanite, one of the rarest stones in the world. Discover all new tanzanite designs and styles at exceptional duty and tax free savings, from affordable pendants to luxurious tanzanite rings, in exclusive, one of kind designs. Whitecaps, Deck 3, Forward.

MICHELLE WATCHES

Swiss made watches with intricate details. Purchase face and bands separately to personalize the look. Whitecaps, Deck 3, Forward.

OFFICER PIN TRADING

Your chance to trade pins with the officers of the Disney Fantasy. 7.30 - 8.15 p.m. Preludes, Deck 3, Forward.

Due to port regulations, when the ship is docked, the stores will remain closed.

IMPORTANT INFORMATION

Security Notice

All Guests (including children) who wish to disembark the ship are required to present their Key to the World card at the gangway. A photo ID is also required for those Guests who are 18 years of age or older. Guests under the age of 18 are required to have a Parent, Guardian or other responsible adult sign an authorization form at the time it is given out if they wish to go ashore unaccompanied. Authorization forms are available at the gangways and Guest Services.

Please Note:

Please remember to use plenty of sunscreen and mosquito repellent when venturing ashore.

Cold and Flu Reminder

Please wash hands frequently and thoroughly, particularly before meals. Contact the Health Center by dialing 7-1923, should anyone in your party become ill.

Corridor Quiet Hours

As a courtesy to all our Guests, please recognize quiet hallway hours from 10:00 p.m. til 8:00 a.m.

Inclement Weather

For the safety of all Guests, outdoor events may be changed due to unforeseen weather conditions.

Environmental Message

With Disney's commitment to the Environment, please refrain from throwing anything over the Ship's side. Thank you!

No Reserved Seats Policy

As a courtesy to all our Guests, we kindly advise that the saving of seats is not permitted in the Walt Disney Theatre, and the saving of the sun loungers is not permitted on Deck 11, 12, and 13. Items left unattended will be returned to lost and found at Guest Services, Deck 3 Midship.

Smoking

For the comfort of our guests the following areas are designated as Smoking areas: - Promenade Deck (Deck 4), smoking is permitted Port Side, Aft only from 6:00 p.m. to 6:00 a.m.
- Currents - Deck 13, Forward, Port Side.
- Meridian Bar - Deck 12, Aft, Port Side, outside.
- Smoking is permitted on stateroom verandahs. Smoking is prohibited inside all guest staterooms. Guests found smoking in their staterooms will be charged a \$250 stateroom recovery fee.

Walt Disney Theatre

Theatrical performances may use artificial fog, strobe lights, pyrotechnics and other special effects. For the safety of our performers and the comfort of those around you, the use of any photography, video recording device or any electronic equipment is prohibited.

Verandah Safety

Please do not leave any combustible materials on your balcony when not present in your stateroom for safety reasons.
DF/BD/7/W/002/4.14.12/RD/©DISNEY

	8:30	8:45	9:00	9:15	9:30	9:45	10:00	10:15	10:30	10:45	11:00	11:15	11:30	11:45	12:00	12:15	12:30	12:45	1:00	1:15	1:30			
FUNNELVISION	Dumbo (G) FunnelVision				Disney Channel on Deck FunnelVision				Monsters Inc. (G) FunnelVision															
MOVIES																								
CHARACTER	Stitch Lobby Atrium		Pluto Dk 4, Midship		Chip & Dale Lobby Atrium		Goofy Lobby Atrium		Pluto Dk 4, Midship		Buzz Lobby Atrium		Stitch Dk 4, Midship											
FUN FOR ALL AGES	Disney Animation: Persistence of Vision D Lounge				Bingo Pre Sales				\$5,000 MEGA Jackpot Bingo D Lounge				Last Minute Shopping Advice Gangway											
	Behind the Scenes Presentation Buena Vista Theatre				Shopping Highlights La Piazza				Disney Vacation Club Presentation The Tube				MICKEY 200 The Tube (Limited availability)											
ADULTS	Seminar: Back Pain Solutions Outlook				Seminar: Secrets to a Flatter Stomach Outlook				Facial Workshop Outlook															
ADULTS	Friends of Bill W. Outlook		Boot Camp (Fee Camp) Senses Fitness Center		Art of the Theme Show Tour Meet at Meridian				18*21 Smoothie Time Outlook															
Vibe					Open House				Kinect Sports				Open House				Foosball				Anyone Can Cook - Cupcakes			
Edge					Open House				Kinect Sports												Just Dance			
Oceaneer Lab					Super Sloppy Science - Eggsperiments								Human Bingo				Youth Lunch				Magic Playfloor			
Oceaneer Club					Open House								Aloha Luau				Tinker Bell's Talent Show				Parachute Games			
Out & About					Open House in Edge				Fitness Frenzy (Fee Apples)				Vibe Open House											

Symbol for activities that will be repeated during the cruise

	1:45	2:00	2:15	2:30	2:45	3:00	3:15	3:30	3:45	4:00	4:15	4:30	4:45	5:00	6:15	6:30	6:45	6:00	6:15	6:30	6:45			
FUNNELVISION	Up (G) FunnelVision				Pixar Shorts (G) FunnelVision				Ratatouille (G) FunnelVision															
MOVIES	Toy Story 3 (PG) DOLBY 3D Buena Vista Theatre				War Horse (PG-13) Buena Vista Theatre								>7:26 p.m.											
CHARACTER					Buzz				Remy		Woody		Emile											
FUN FOR ALL AGES	Pictionary La Piazza				Cruisin' for Trivia O'Gills Pub				Wishes Walt Disney Theatre				Live Piano with Charlie Reuter Lobby Atrium				Wishes Walt Disney Theatre							
ADULTS	Origami La Piazza				Club 18*21 Xbox™Kinect® Challenge O'Gills Pub																			
ADULTS					Longest Drive Golf Simulator				Pathway to Yoga Senses Fitness Center															
Vibe	Photo Hunt				Disney Animation: Cartoon Physics				Dive into DJ'ing															
Edge					Anyone Can Cook - Pizza				Stop the Boat				Wipeout Challenge											
Oceaneer Lab					Magic Show				Marshmallow Madness				Marshmallow Madness				Youth Dinner							
Oceaneer Club	Gaga Ball				Puzzle Playtime				Once Upon a Time				Picture This											
Out & About	Basketball Challenge				Memory Wall																			

FOLD

Fold along the dotted lines and take me with you so you don't miss any of the fun!

	7:00	7:15	7:30	7:45	8:00	8:15	8:30	8:45	9:00	9:15	9:30	9:45	10:00	10:15	10:30	10:45	11:00	11:15	11:30	11:45	12:00			
FUNNELVISION					Bolt (PG) FunnelVision				Enchanted (PG) FunnelVision															
MOVIES					War Horse (PG-13) Buena Vista Theatre				Disney Nature: African Cats (PG) Buena Vista Theatre				>12:29 a.m.											
CHARACTER	Belle Dk 4, Midship		Buzz Lobby Atrium		Emile Lobby Atrium		Minnie Lobby Atrium		Tiana Dk 4, Midship		Mickey Lobby Atrium		Lilo & Stitch Dk 4, Midship		Minnie Lobby Atrium									
FUN FOR ALL AGES	Michael Holy The Tube		Bingo Pre Sales		Mega Raffle Jackpot Bingo		Wishes Walt Disney Theatre		Family Karaoke D Lounge		Disney Trivia D Lounge		Live Piano with Charlie Reuter Lobby Atrium											
ADULTS	Partner Playoff O'Gills Pub				Club 18*21 Mixer Outlook				Pop! The Tube				Goin' Underground with Guest DJ Cide The Tube											
ADULTS	Live Music with "The Dreamers" La Piazza				Live Guitar with Rob Thompson O'Gills Pub				Pub Quiz 2 O'Gills Pub				Live Guitar with Rob Thompson O'Gills Pub											
Vibe	ESPN Dream Team Draft Day				Smoothie Hour				Pump it Up!				> Till' 11:00 p.m.				Ghost Voyagers				Hangin' in Vibe > 2:00 a.m.			
Edge	Pictionary				That's Hilarious				Gender Wars				Chillin' in Edge				> 1:00 a.m.							
Oceaneer Lab	Anyone Can Cook - Cupcakes				Stop the Boat				Get the Hook				Gaga Ball											
Oceaneer Club					Disney Animation: Creating a Character				Movie Time															
Out & About	Shuffleboard Tournament				Magic Playfloor																			

OUT & ABOUT SERIES

IN THE SPOTLIGHT SERIES

SOLVE IT! SERIES

JUMP UP! SERIES

CREATE & INVENT SERIES

CLUBHOUSE SERIES

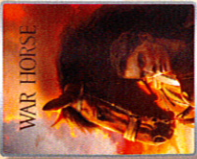
STORYBOOK SERIES

TUESDAY, APRIL 17, 2012 - COSTA MAYA

BUENA VISTA THEATRE



2:00 p.m.
Run Time: 1 hr 43 mins
Rating: G



5:00 & 8:00 p.m.
Run Time: 2 hrs 26 mins
Rating: PG-13



11:00 p.m.
Run Time: 1 hr 29 mins
Rating: PG



GOOFY'S SPORTS

Digital Simulators

Sports Simulator
(Basketball, Baseball, Hockey, or Soccer) \$25 / half hr, \$45 / hr
\$12 / half hr, \$20 / hr

Reservations can be made at the Port Adventures Desk, Deck 5, Midship or at the Simulators, Deck 15, Air

Character Appearances

- STITCH**
Lobby Atrium - 9:00 a.m.
Deck 4, Midship Balcony - 11:00 a.m.
- PLUTO**
Deck 4, Midship Balcony - 9:15 a.m.
Deck 4, Midship Balcony - 10:15 a.m.
- CHIP & DALE**
Lobby Atrium - 9:30 a.m.
Lobby Atrium - 10:30 a.m.
- GOOFY**
Lobby Atrium - 10:00 a.m.
Lobby Atrium - 11:00 a.m.
- BUZZ LIGHTYEAR**
Lobby Atrium - 9:30 a.m.
Lobby Atrium - 10:30 a.m.
Lobby Atrium - 5:00 p.m.
Lobby Atrium - 7:30 p.m.
Lobby Atrium - 10:00 p.m.
- WOODY & JESSIE**
Lobby Atrium - 10:00 a.m.
Lobby Atrium - 11:00 a.m.
Lobby Atrium - 5:30 p.m.
Lobby Atrium - 8:00 p.m.
Lobby Atrium - 9:30 p.m.
- DONALD DUCK**
Lobby Atrium - 5:00 p.m.
- REMY**
Lobby Atrium - 5:15 p.m.
Lobby Atrium - 7:15 p.m.
Lobby Atrium - 9:45 p.m.
- BELLE**
Deck 4, Midship Balcony - 5:15 p.m.
Deck 4, Midship Balcony - 7:15 p.m.
- EMILE**
Lobby Atrium - 5:45 p.m.
Lobby Atrium - 7:45 p.m.
Lobby Atrium - 10:15 p.m.
- PRINCESS TIANA**
Deck 4, Midship Balcony - 5:45 p.m.
Deck 4, Midship Balcony - 8:15 p.m.
Deck 4, Midship Balcony - 9:30 p.m.
- LILO & STITCH**
Lobby Atrium - 5:30 p.m.
Deck 4, Midship Balcony - 7:45 p.m.
Deck 4, Midship Balcony - 10:00 p.m.
- MICKY MOUSE**
Lobby Atrium - 7:30 p.m.
Lobby Atrium - 9:45 p.m.
- MINNIE MOUSE**
Lobby Atrium - 8:00 p.m.
Lobby Atrium - 10:15 p.m.

For details of daily Disney character appearances, refer to the character line on your Navigator Grid, or the digital character board in the Lobby Atrium.

YOUTH ACTIVITIES THEMED EXPERIENCES

- CLUBHOUSE SERIES**
focuses on movement and features content which appeals to younger children.
- STORYBOOK SERIES**
is designed with a strong connection to the Disney classic stories.
- JUMP UP! SERIES**
includes large ground games & movement-oriented activities.
- CREATE & INVENT SERIES**
will have a tactile focus allowing children to create and admire their work.
- IN THE SPOTLIGHT SERIES**
focuses on children's stage presence with lots of activities and enthusiasm.
- SOLVE IT! SERIES**
are less active, but will challenge children with problem/solutions-based activities.
- OUT & ABOUT SERIES**
Set outside secured Youth Activities spaces, very active, appealing to Tweens. Recommended 8 - 14 years

SHIP DIRECTORY

YOUTH ACTIVITIES

DISNEY'S OCEANEER CLUB	9:00 A.M. - 11:00 P.M.
DISNEY'S OCEANEER LAB	9:00 A.M. - 12:00 M.D.
EDGE	10:00 A.M. - 1:00 A.M.
IT'S A SMALL WORLD NURSERY	9:00 A.M. - 11:00 P.M.
VIBE	12:00 P.M. - 2:00 A.M.

RECREATION

AQUADUCK	9:00 A.M. - 10:00 P.M.
AQUALAB	9:00 A.M. - 7:00 P.M.
DONALD'S POOL	6:00 A.M. - 11:00 P.M.
GOLF SPORTS SIMULATORS	9:00 A.M. - 6:00 P.M.
GOOFY GOLF	8:00 A.M. - 10:00 P.M.
GOOFY'S SPORTS DECK	8:00 A.M. - 6:00 P.M.
MICKY'S POOL	6:00 A.M. - 11:00 P.M.
MICKY'S SLIDE	9:00 A.M. - 6:00 P.M.
MIDSHIP DETECTIVE AGENCY	9:00 A.M. - 9:00 P.M.
NEMO'S REEF	9:00 A.M. - 7:00 P.M.
PORT ADVENTURES DESK	9:00 A.M. - 1:00 P.M. 7:00 P.M. - 8:30 P.M.
QUIET COVE POOL	6:00 A.M. - 12:00 M.D.
SATELLITE FALLS	6:00 A.M. - 6:30 P.M.
SENSES FITNESS CENTER	6:30 A.M. - 10:00 P.M.

GENERAL INFORMATION

ARR-CADE	24 HOURS
DISNEY VACATION CLUB DESK	5:00 P.M. - 10:00 P.M.
FUTURE CRUISE SALES DESK	10:00 A.M. - 12:00 P.M. 4:00 P.M. - 6:00 P.M. 7:30 P.M. - 8:30 P.M.
GUEST SERVICES	24 HOURS
MEDICAL HEALTH CENTER	9:30 A.M. - 11:00 A.M. 4:30 P.M. - 7:00 P.M.
PRELUDES	3:30 P.M. - 4:15 P.M. 8:45 P.M. - 9:30 P.M. 9:00 P.M. - 9:45 P.M.
PORT & SHOPPING DESK	7:30 P.M. - 8:30 P.M.
SENSES SPA AND SALON	8:00 A.M. - 10:00 P.M.
SHUTTERS PHOTO GALLERY	9:00 A.M. - ARRIVAL 5:00 P.M. - 11:00 P.M.
SHUTTERS DIGITAL	24 HOURS
BIEBIDI BOBBIDI BOUTIQUE	9:00 A.M. - 9:00 P.M.
MICKY'S MAINSAIL	9:00 A.M. - ARRIVAL 6:15 P.M. - 11:00 P.M.
SEA TREASURES	9:00 A.M. - ARRIVAL 6:15 P.M. - 11:00 P.M.
VISTA GALLERY	9:00 A.M. - ARRIVAL 6:15 P.M. - 11:00 P.M.
WHITECAPS	9:00 A.M. - ARRIVAL 6:15 P.M. - 11:00 P.M.

EP:PB:RW/002/4.14.12/RD/C/D/SNEY

DINNER MENU
Animators', Palace, Prince & Princess
Enchanted Garden, Prince & Princess
Royal Court, Prince & Princess
Dining Times: 5:45pm & 8:15pm

Evening Attire: Cruise Casual

DINING & LOUNGES

BRACELET

CABANAS CONTINENTAL	DECK 11, AFT	7:00 A.M. - 7:30 A.M.
CABANAS	DECK 11, AFT	7:30 A.M. - 10:45 A.M.
ENCHANTED GARDEN	DECK 2, MID	8:30 A.M. - 10:30 A.M.
ROYAL COURT	DECK 3, MID	8:00 A.M. - 9:30 A.M.

WINKA

CABANAS	DECK 11, AFT	12:00 P.M. - 2:15 P.M.
FILLMORE'S FAVORITES	DECK 11, MID	10:30 A.M. - 6:00 P.M.
LUIGI'S PIZZA	DECK 11, MID	10:30 A.M. - 6:00 P.M.
ROYAL COURT	DECK 3, MID	12:00 P.M. - 1:30 P.M.
TOW MATER'S GRILL	DECK 11, MID	10:30 A.M. - 11:00 P.M.

DINNER

ANIMATOR'S PALATE	DECK 3, AFT	5:45 P.M. & 8:15 P.M.
ENCHANTED GARDEN	DECK 2, MID	5:45 P.M. & 8:15 P.M.
ROYAL COURT	DECK 3, MID	5:45 P.M. & 8:15 P.M.
CABANAS TABLE SERVICE	DECK 11, AFT	6:30 P.M. - 8:30 P.M.

LATE NIGHT SHARKS

LA PIAZZA (18+)	DECK 4, AFT	10:45 P.M. - 11:45 P.M.
LUIGI'S PIZZA	DECK 11, MID	9:30 P.M. - 12:30 A.M.

ADDED FEATURES

BEVERAGE STATION	DECK 11, MID	24 HOURS
EYE SCREAM	DECK 11, MID	11:00 A.M. - 11:00 P.M.
ROOM SERVICE	DIAL 0	24 HOURS

ENTERTAINMENT - LOUNGES - BARS

Adults must be 21 and older to consume alcoholic beverages.

BON VOYAGE	DECK 3, MID	9:30 A.M. - 11:00 P.M.
COVE BAR (18+)	DECK 11, FWD	9:30 A.M. - 10:30 P.M.
COVE CAFE (18+)	DECK 11, FWD	7:00 A.M. - 12:00 M.D.
CURRENTS (18+)	DECK 13, FWD	10:00 A.M. - 11:00 P.M.
D LOUNGE	DECK 4, MID	SHOW TIMES
FROZONE	DECK 11, MID	11:00 A.M. - 10:30 P.M.
LA PIAZZA	DECK 4, AFT	3:00 P.M. - 12:00 M.D.
MERIDIAN (18+)	DECK 12, AFT	5:00 P.M. - 12:00 M.D.
O'GILLS PUB	DECK 4, AFT	4:00 P.M. - 12:00 M.D.
O'OH LA LA (18+)	DECK 4, AFT	5:00 P.M. - 12:00 M.D.
OUTLOOK	DECK 14, MID	4:30 P.M. - 12:00 M.D.
SKYLINE (18+)	DECK 4, AFT	10:00 P.M. - 2:00 A.M.
THE TUBE (18+)	DECK 4, MID	7:30 A.M. - 10:00 P.M.
VISTA CAFE	DECK 12, AFT	10:00 A.M. - 6:30 P.M.
WAVES	DECK 12, AFT	10:00 A.M. - 6:30 P.M.

Consumers who order raw or partially cooked, ready-to-eat food of animal origin, are hereby informed that the food is not sufficiently cooked to ensure its safety.

All Ashore: Approx. 12:45 p.m.

All Aboard: 5:30 p.m.

IMPORTANT INFORMATION

Please check your Port Adventure tour tickets for meeting times and locations. Visit the Port Adventures Deck 5, Midship, for any questions.

SHIP'S AGENT IN COSTA MAYA IMPORTANT NUMBERS

Sr. Marco Souza
Carmichel, Coordinador General,
Aconsur, Mahahual, Q. Roo, México
Tel: 52 983 45674 or 521 98370052531

Fire/Security: 7-3001
Medical Emergency: 7-3000
Health Center: 7-1923